

Along streams, up hills, between trees.  
Follow The Outdoor City Run Routes and  
explore the greenest city on foot.

## THE OUTDOOR CITY RUN ROUTES



Paths to panoramic views  
at High Hazels & 70 Acre Hill

Provided by:



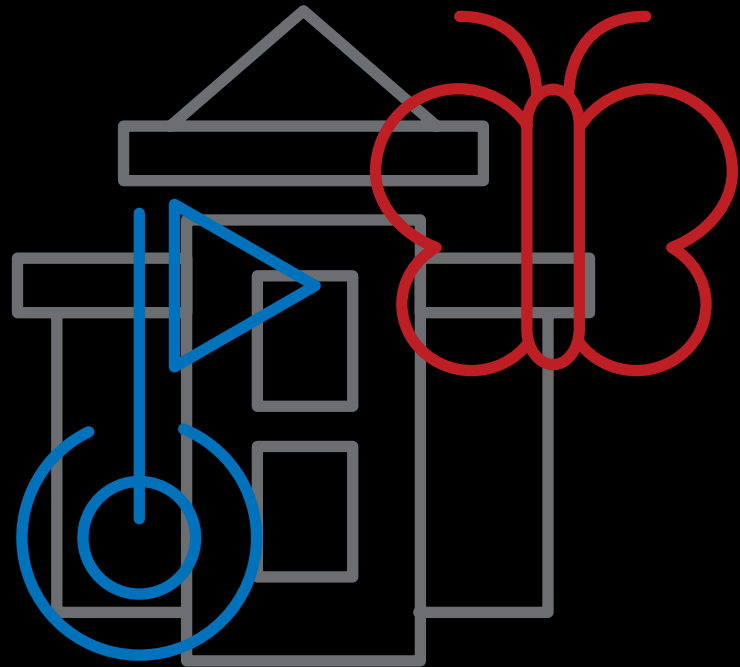
Supported by:



For more information on this and other run routes:

[www.theoutdoorcity.co.uk](http://www.theoutdoorcity.co.uk)

#findyourpace



High Hazels Park has a long history as a pleasure ground overlooking the city. It connects to 70 Acre Hill nature reserve to the northeast – once part of Tinsley Park Colliery, it's now home to grassland, woodland and wetland habitats.

Both routes are hilly and lead to great panoramic views over Sheffield and Rotherham.

The green route stays on good tracks within the park, and there's an alternative start point at Senior Road. The blue route joins the Trans Pennine Trail and laps 70 Acre Hill. It's a steady climb, but the views from the top are unbeatable.

Relax with a post-run refreshment at the golf club's cafe.



## DISTANCE

1.6KM

4.7KM

## DIFFICULTY

EASY

MEDIUM

## TERRAIN

Mostly tarmac on the shorter route, varied terrain with unsurfaced tracks on the longer route.

## FACILITIES/SUITABLE FOR



## LOCATION

S9 4PE

## GPX LINK

[http://gb.mapometer.com/running/route\\_4429916.html](http://gb.mapometer.com/running/route_4429916.html)



### FIND YOUR PACE IN THE OUTDOOR CITY

Thirty run routes are now signposted and mapped across fourteen locations. Explore Sheffield by seeking The Outdoor City Run Routes we've marked in parks and woodland across the city. We've colour coded them so that whatever your pace you can choose trails that suit **Easy, Medium, Hard** and Challenging. You'll soon find that every route gives you a different experience whether you choose to walk or run – it's all about finding your pace.

- Bradfield to Damflask **5KM 10KM**
- City Centre **2.4KM 5.7KM**
- Concord & Woolley Wood **2.5KM 4KM**
- Ecclesall Wood **1.2KM 4KM 5KM 14KM 24KM**
- Firth Park **1.7KM 4.3KM**
- Graves Park **2.5KM 4KM**
- High Hazels **1.6KM 4.7KM**
- Lowfield **355M**
- Manor Fields Park **1.6KM**
- The Ponderosa & Crookes Valley **1KM 3KM**
- Rivelin **2.1KM 3.7KM**
- Shirebrook **1.3KM 5.3KM**
- Thorncliffe **2.3KM 4KM**
- Wharncliffe **1.2KM 4.5KM 10KM**

